

CERTIFICATE OF LOCATION OF GOVERNMENT CORNER

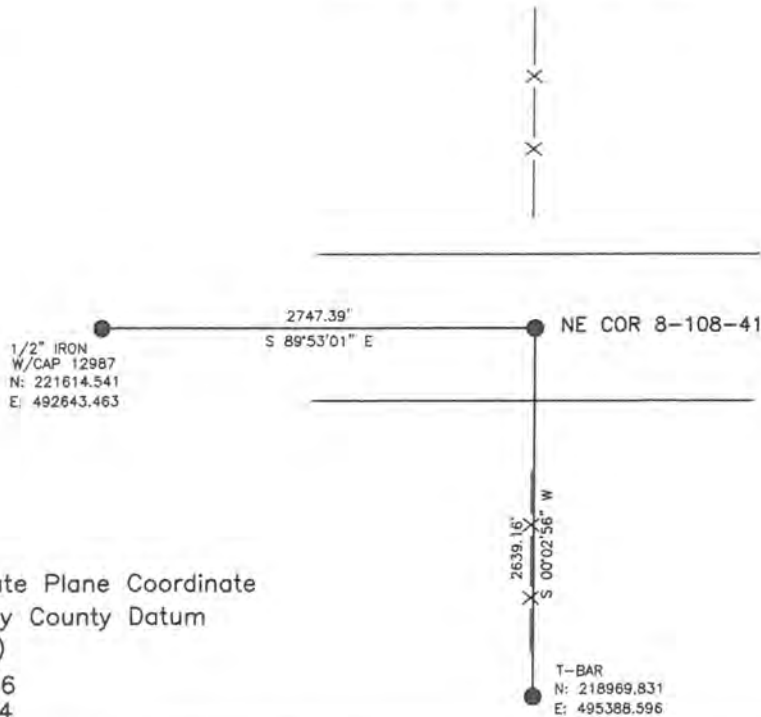
Northeast Corner of Section 8, Township 108, Range 41, 5TH P.M.

STATE OF MINNESOTA, County of Murray

At the corner location shown on the sketch:

- On Jan 4, 2019 found a iron monument with seal no. 12967
DATE
- left monument as found, lowered monument, removed monument (explain)
- On _____ placed a _____
DATE

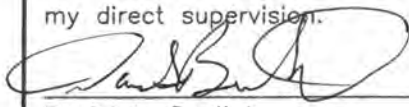
SKETCH OF REFERENCE TIES



Minnesota State Plane Coordinate
 System Murray County Datum
 NAD83 (1996)
 N: 221608.966
 E: 495390.844

Statement of evidence relative to this corner location is on back of page.

I hereby certify that this document and the data contained herein was prepared by me or under my direct supervision.

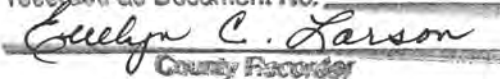


Daniel L. Bueltel
 License No. 43844

1/22/2019
DATE

STATE OF MINNESOTA, } ss.
 COUNTY OF MURRAY, }

I hereby certify that the within instrument was filed in this office for record on the 5TH day of FEBRUARY A.D. 20 19 at 9:00 o'clock A. M. and was duly recorded as Document No. _____


 County Recorder

Statement of Evidence

NE 8-108-41

In 1861, L.M. Fletcher did the original survey of the township.

January 19, 1987, Gary Martin shows a found an iron mounment on survey.

January 4, 2019, Buetlel-Moseng Land Surveying found an iron monument with seal no. 12967 in centerline of road and in line with fences to north and south.